

The Academic Booster Club presents...

A Family Extended Learning Opportunity

Seattle's International District Self-Guided Walking Tour

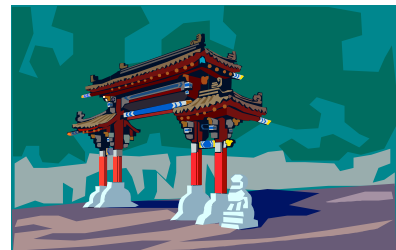
Saturday, March 19

This is a wonderful chance for you to have a “family field trip” that builds on classroom learning. The social studies content for this year includes CULTURES for 3/4th grade and US HISTORY for 5/6th classes.

- ❖ ***Wander through the historic International District of Seattle.***
- ❖ ***Observe a neighborhood built around Asian cultures.***
- ❖ ***Consider what life was like for new immigrants.***
- ❖ ***Experience a community that lived through the internment.***

Optional sights include...

Uwajimaya Asian Market
The Dragon Pole and Chinese Gate
Hing Hay Park
Wing Luke Museum (admission fee required)



Consider adding on a free Metro bus-tunnel ride to Westlake Center. Then head out to experience the culture of Pike Place Market. Or, hop on the monorail to wander Seattle Center.

This is a self-directed event. Detailed maps and information about various sights will be available soon on the ABC website or your teacher's SWIFT site. Link up with some other classmates and enjoy a great day exploring together.

www.questabc.org